

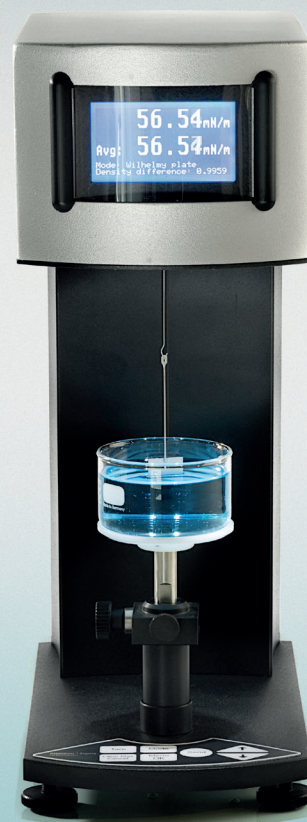
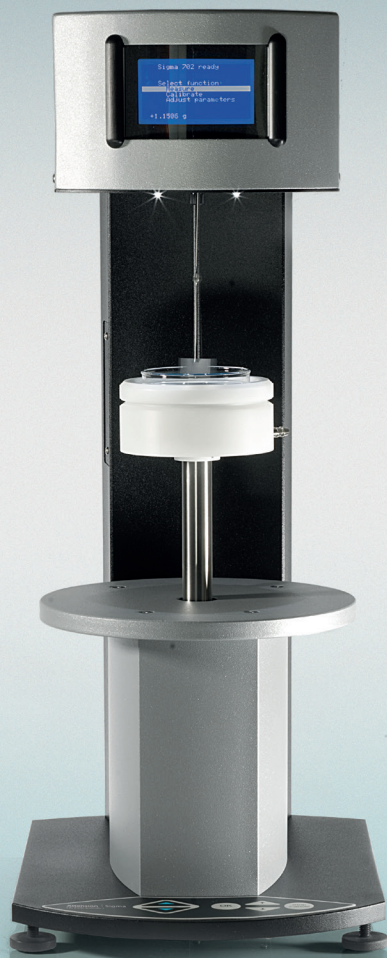


Sigma 702 - Standalone

Sigma 702ET - Transformer oil analyzer

Sigma 703D - Manual

Accessories



Intuitive and accurate

# Attension Sigma Accessories

Sigma 702 Standalone, Sigma 702ET Transformer Oil Analyzer and Sigma 703D Manual are accurate force tensiometers designed for optimal ease of use.

With their wide range of accessories, their capabilities can be expanded to match the needs of efficient R&D and industrial QC.

## [ ENVIRONMENTAL CONTROL ]

Environmental factors such as temperature and air currents may have a major impact on the results and the measured phenomena. These factors can be measured and controlled with various accessories

### Thermostatic vessel (from -10 to +100°C) | ref. T705

For temperature control of the sample liquid. A heat exchange vessel with fluid jacket type of construction. Heating/cooling of the fluid jacket requires external bath/circulator, not included in T705. Fits glass sample vessel 70 mm in diameter (T104).

### Thermostatic vessel (from -20 to +200°C) | ref. T705A

For temperature control of the sample liquid. A heat exchange vessel with fluid jacket type of construction. Heating/cooling of the fluid jacket requires external bath/circulator, not included in T705A. Fits glass sample vessel 70 mm in diameter (T104).

### Gas phase temperature controller | ref. T115

A glass lid mounted on top of thermostated sample vessels for regulation of the air temperature during measurement. Heating/cooling fluid circulates inside the glass lid. Prevents evaporation and condensation while measuring. Requires external bath/circulator, not included in T115.

### Bath/circulator, Julabo CD-200F | ref. T102USB

Stand-alone bath/circulator, for sample liquid temperature regulation. Temperature range -20 to +150°C. Stability  $\pm 0.03^\circ\text{C}$ . Digital readout. Includes necessary tubing for connection to Sigma.

### Bath/circulator, Julabo F25-ME | ref. T102ME

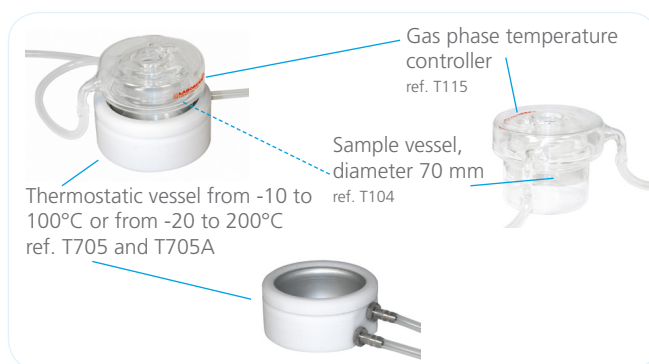
Stand-alone bath/circulator, for sample liquid temperature regulation. Temperature range -28 to +200°C. Stability  $\pm 0.01^\circ\text{C}$ . Digital readout. Includes necessary tubings for connection to Sigma. Can be equipped with external PT100 temperature probe (T102MT) to maintain the desired temperature in the sample vessel.

### PT-100 temperature probe for T102ME | ref. T102MT

PT-100 temperature probe and probe holder to enable stand-alone temperature control by the T102ME in the sample vessel.

### Cabinet | ref. T140CAB

A transparent cabinet to protect the measurements against environment e.g. air flow. Dimensions (mm): 772 height x 560 width x 520 depth.



Bath/circulator, Julabo CD-200F  
ref. T102USB



Cabinet  
ref. T140CAB



## [ PROBES AND CALIBRATION ]

Attension offers a variety of measurement probes and calibration tools to ensure the functionality and preciseness of each Sigma 702, Sigma 702ET and Sigma 703D.

### Platinum Du Noüy ring | ref. T106

Pt-Ir-ring made to fulfill the requirements at least of following standards: ISO 301, ISO 4311, ISO 6889, ASTM D1331 and ASTM D 971. Includes also additional weight for push-mode. Packed in a protective wooden box.

### Certificate for Du Noüy ring dimensions | ref. T106A

A document confirming the ring quality, dimensions and specifications. Issued only for new unused rings.

### MIKES calibration certificate for Du Noüy ring | ref. T106B

A certificate confirming the ring quality, dimensions and specification to relevant ISO, ASTM and DIN norms. Issued by the Center for Metrology and Accreditation of Finland.

### Wilhelmy Plate, platinum plate with micro roughened surface | ref. T107

Platinum Wilhelmy plate with micro-roughened surface for surface tension and interfacial tension measurements.

### Certificate for Wilhelmy plate dimensions | ref. T107A

A document confirming the plate quality, dimensions and specifications. Issued only for new unused plates.

### MIKES Calibration Certificate for Wilhelmy Plate | ref. T107C

A certificate confirming the plate quality, dimension and specification to relevant ISO, ASTM and DIN norms. Issued by the Center for Metrology and Accreditation of Finland.

### Ring re-form tool | ref. T108

Tool for straightening a deformed Du Noüy ring. Du Noüy rings can be accidentally bent in usage, and to get it back in shape a ring re-form tool can be used.

### Calibration verification kit | ref. T117B

Set of weights with DKD certificate for validation of tensiometers. Including 3 weights with DKD certificate, weight holder, tweezers and operating instructions. (DKD = Deutschen Kalibrierdienst, the German calibration service).

### Calibration weight | ref. T120

Calibration weight with a known mass for instrument calibration. As a spare part, instrument already includes one calibration weight.

### Biolin Scientific Certificate for calibration weight T120 | ref. T107

A certificate confirming the mass of the calibration weight. Issued only for new unused weights.

### Digital thermometer | ref. T202

Battery operated with display and probe for temperature measurement directly from sample.

## [ DENSITY ]

Sigma 702/702ET/703D are able to measure liquid density with the density probe.

### Density measurement device | ref. T113

Glass probe for measurement of liquid density. For density range up to  $2.2 \text{ g/dm}^3$ .

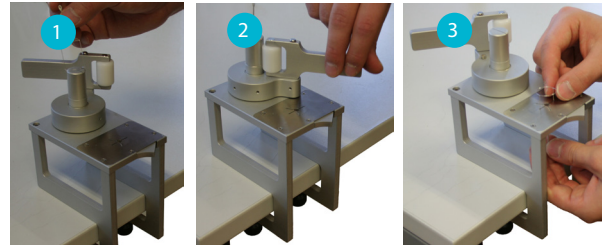


Du Nouy ring & additional weight  
ref. T106



Wilhelmy plate  
ref. T107

Calibration kit  
ref. T117B



Ring re-form tool | ref. T108



Density measurement device  
ref. T113

## [ OTHER ACCESSORIES ]

### Sample vessel, diameter 70 mm, 10 pcs/box I ref. T104

Glass sample vessels for Sigma 702/702ET/703D.

### Sample vessel, diameter 50 mm, 10 pcs/box I ref. T105

Glass sample vessels for Sigma 702/702ET/703D.

### Result printer I ref. T702PR

Compact thermal printer for directly printing your results on paper for records. Direct connection to Sigma.



Sample vessel, diameter 50 mm  
ref. T105



Sample vessel, diameter 70 mm  
ref. T104

## [ MAINTENANCE & SERVICES ]

Attention offers a range of services from installation and application training to performance certificates, preventative maintenance and repair services. Please contact your sales representative to get the most updated information on the services offered.

*Specifications and appearance are subject to change without prior notice. Biolin Scientific shall not be liable for any errors in this document.*

Available in the US & Canada exclusively from:

	480.758.5400 www.nanoscience.com info@nanoscience.com
--	---



## Biolin Scientific

[ Progress Together ]

Biolin Scientific AB, Box 70379, SE-107 24 Stockholm, Sweden

Visiting address: Klarabergsviadukten 70, House D, floor 8

Phone: +46 31 769 7690, E-mail: info@biolinscientific.com

www.biolinscientific.com

### About Us

Biolin Scientific is a leading Nordic instrumentation company with roots in Sweden, Denmark and Finland. Our customers include companies working with pharmaceuticals, energy, chemicals, and advanced materials, as well as academic and governmental research institutes. Our precision instruments help discover better drugs faster, develop better solutions for energy and materials, and perform research at the frontiers of science and technology.